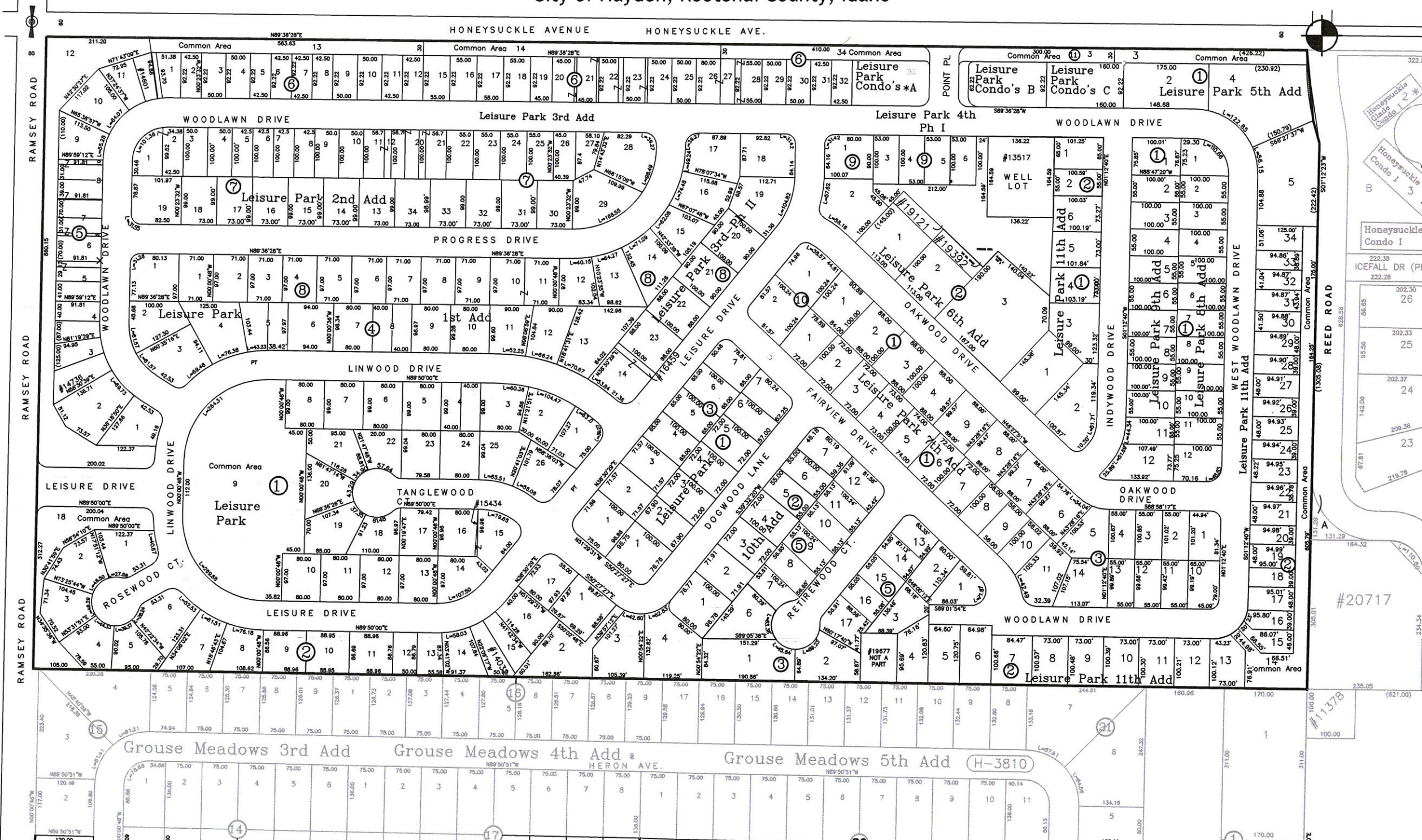
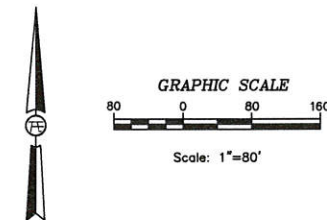


# Overall Layout Map for Leisure Park

A Portion of the SW 1/4. Sec. 23, Twp. 51 N., R. 4 W., B.M.,  
City of Hayden, Kootenai County, Idaho



Tate Engineering, Inc.  
1625 North 4th Street, Ste. 204  
Coeur d'Alene, Idaho, 83814  
(208) 676-8708 e-mail: info@tate-eng.com

THIS DRAWING AND THE INFORMATION CONTAINED HEREIN IS THE PROPERTY OF TATE ENGINEERING, INC. AND IS NOT TO BE REPRODUCED, COPIED, OR TRANSMITTED IN ANY FORM OR BY ANY MEANS, ELECTRONIC OR MECHANICAL, INCLUDING PHOTOCOPYING, RECORDING, OR BY ANY INFORMATION STORAGE AND RETRIEVAL SYSTEM, WITHOUT THE WRITTEN PERMISSION OF TATE ENGINEERING, INC.