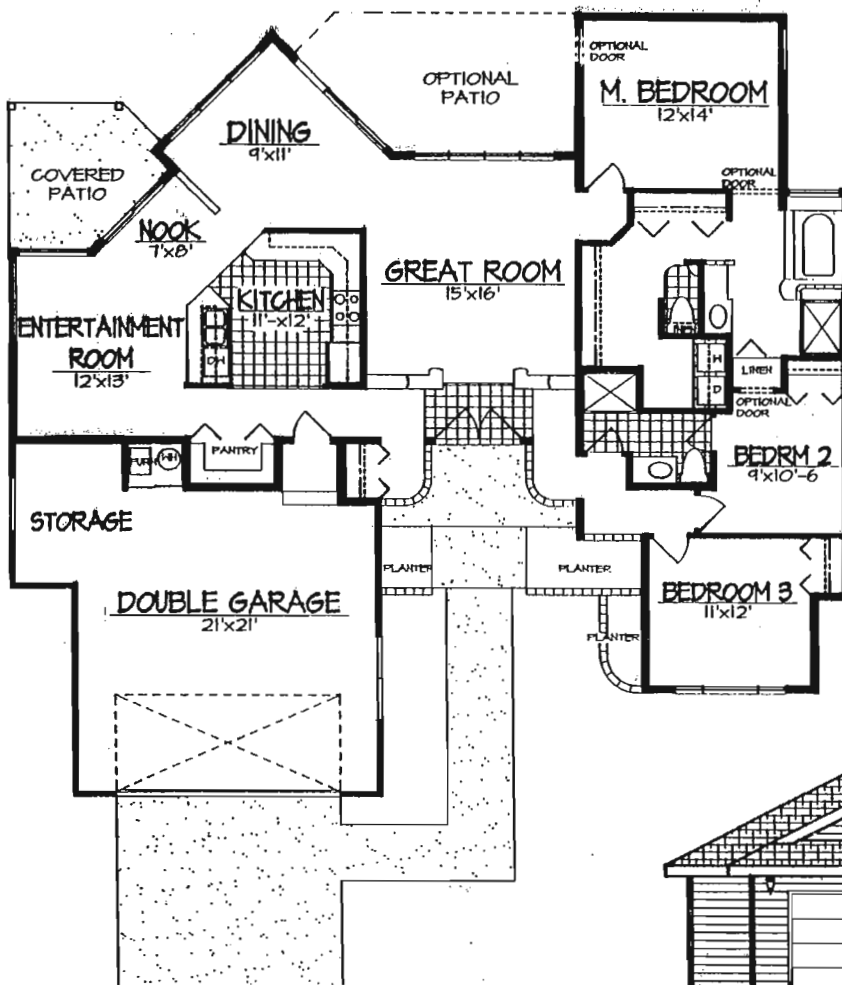


THE WESTWOOD IN THE WILD WEST

What a plan - Angles and off-sets really create an outstanding curb appeal to this 3 bedroom, 2 bath Westwood floor plan. Eborall Construction, Inc. has managed to design a plan that is versatile, has plenty of natural light, extra storage, and extra's that become standard features in this superb plan. All the rooms are large, roomy, and airy, with the 10' ceilings in the entry and great room. There is a formal and informal dining room, as well as formal and informal living areas. The master bath has a garden tub and step in shower. Bedroom #2 can be a guest room, or convert it to join the master bedroom creating his and her bedrooms with access to the master bath and closet area from either bedroom. Plus the garage has an ample storage area for your extra storage needs.

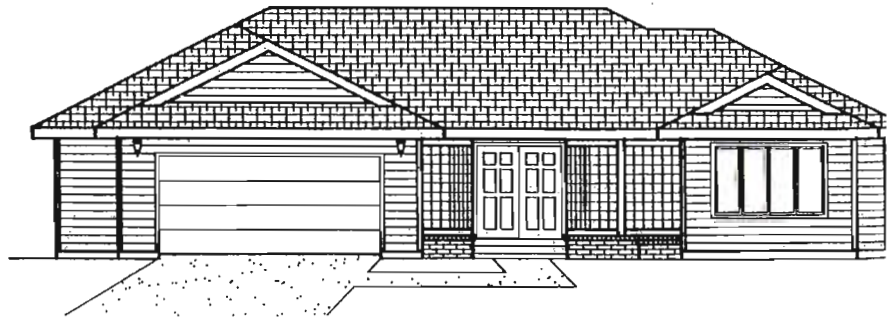
OPTION PACKAGES AVAILABLE

Exterior Option Package Available upon request includes: Second patio off of dining and master bedroom, brick planters, and radius glass block entry. Ask your sales person for further details on this option package.



LEISURE PARK

Westwood - 1776 sq. ft.



CALL DENISE HALL OF EBORALL CONSTRUCTION, INC. 772-9617 (W) 762-3343 (H)

Floor plans and elevations are artist conceptions, and are not intended to show specific detail. Square footage is approximate and room sizes may vary slightly. Options are subject to change without notice. Actual working drawings are drawn and approved prior to commencement of construction.